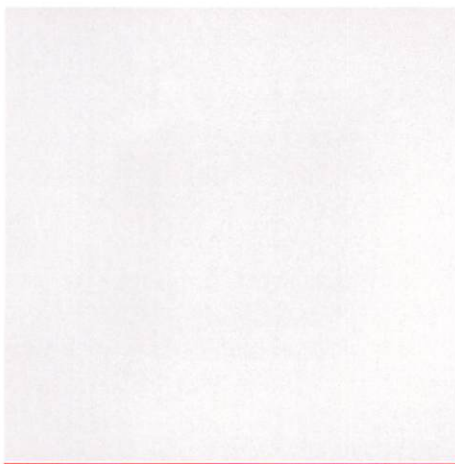




# ELEGANT SOLUTION AND PERFECT ALL-ROUNDER

OWAlifetime collection

**OWA**



Surface example | Octave

<b>Material</b>	Mineral tile, fleece-covered
<b>Reaction to fire</b>	Octave white: class 1 (ASTM E84-97a) class A (ASTM E 1264) A2-s1,d0 according to EN 13501-1
<b>Thickness</b>	5/8" (nom.)
<b>Colour</b>	White, black or grey
<b>Light reflection</b>	Approx. 87 (ISO 7724-2, ISO 7724-3) (white)
<b>Sound reduction*</b>	33 dB, CAC 35 dB
<b>Moisture resistance</b>	up to 95 % RH
<b>Resistance to fire*</b>	up to REI 120 (EN 13501-2)

\* dependent on system, soffit and other project specific factors



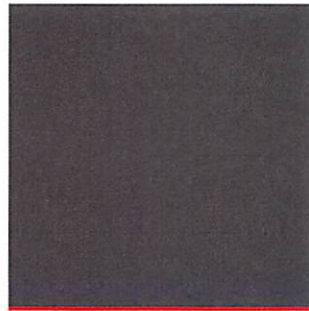
$\alpha_w = 0.85$  | NRC = 0.85

$\alpha_w = 0.85$  | NRC = 0.80

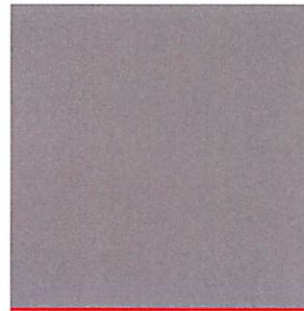
$\alpha_w = 0.85$  | NRC = 0.80



Octave white



Octave black  
Only available for the systems S 3, S 3 cliq, S 15 cliq and S 15b.



Octave grey  
Only available for the systems S 3, S 3 cliq and S 15 cliq.

**Warranty:**  
10 years according our full warranty details

**Recycling content:**  
OWA ceilings have a high recycled content which meets the LEED® requirements MR credit 4.

### Possible dimensions and system combinations

Module size in mm	exposed system						
	S 3	S 3 cliq	S 3a	S 3a cliq	S 15 cliq	S 15a cliq	S 15b*
24" x 24"	•	•	•	•	•	•	•
48" x 24"	•	•	•	•	•	•	•

\* OWAline profile for S 15b in black available on request. | other sizes and dimensions on request



**USA**  
**High Profile (certified distributor)**  
 1715 8<sup>th</sup> Avenue West | Unit 6 & 7  
 Palmetto, FL 34221 | USA  
 tel +01 9 41.4 17 76 48 | fax +01 9 41.7 29 02 48  
 www.owa-ceiling.com

Brochure 9945 us  
091400.5